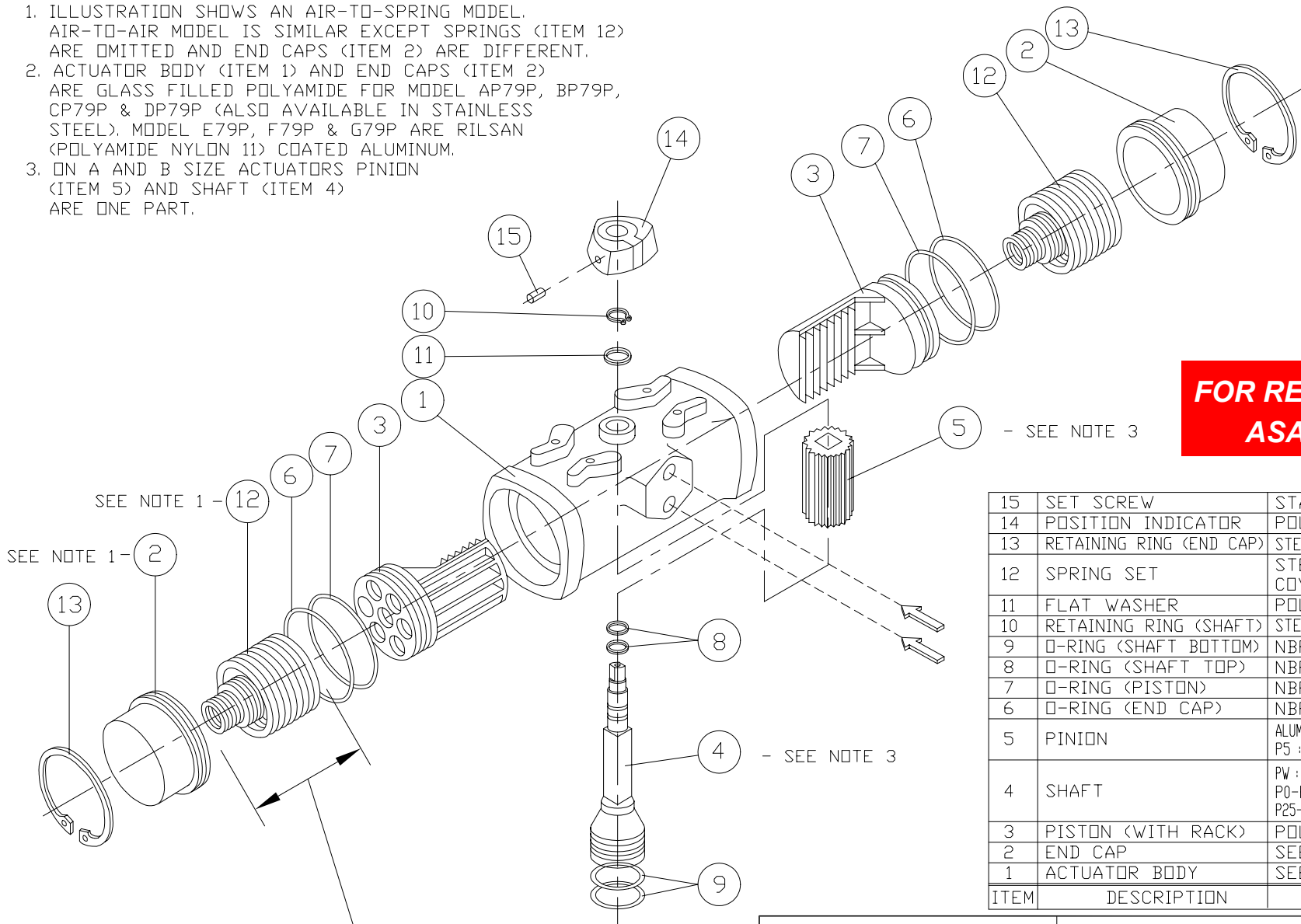


NOTE:

- ILLUSTRATION SHOWS AN AIR-TO-SPRING MODEL. AIR-TO-AIR MODEL IS SIMILAR EXCEPT SPRINGS (ITEM 12) ARE OMITTED AND END CAPS (ITEM 2) ARE DIFFERENT.
- ACTUATOR BODY (ITEM 1) AND END CAPS (ITEM 2) ARE GLASS FILLED POLYAMIDE FOR MODEL AP79P, BP79P, CP79P & DP79P (ALSO AVAILABLE IN STAINLESS STEEL). MODEL E79P, F79P & G79P ARE RILSAN (POLYAMIDE NYLON 11) COATED ALUMINUM.
- ON A AND B SIZE ACTUATORS PINION (ITEM 5) AND SHAFT (ITEM 4) ARE ONE PART.



FOR REFERENCE ONLY
ASAHI/AMERICA

15	SET SCREW	STAINLESS STEEL 303	1
14	POSITION INDICATOR	POLYAMIDE	1
13	RETAINING RING (END CAP)	STEEL COVERED BY CATAPHORESIS	2
12	SPRING SET	STEEL DIN 17-223-6 COVERED BY CATAPHORESIS	1
11	FLAT WASHER	POLYAMIDE 6	1
10	RETAINING RING (SHAFT)	STEEL COVERED BY CATAPHORESIS	1
9	O-RING (SHAFT BOTTOM)	NBR	2
8	O-RING (SHAFT TOP)	NBR	2
7	O-RING (PISTON)	NBR	2
6	O-RING (END CAP)	NBR	2
5	PINION	ALUMINUM ALLOY COVERED BY CATAPHORESIS P5 : STEEL COVERED BY CATAPHORESIS	1
4	SHAFT	PW : GLASS FILLED POLYAMIDE WITH INDX NSERT P0-P2 : INDX STAINLESS STEEL 303 P25-P5 : COVERED STEEL BY CATAPHORESIS	1
3	PISTON (WITH RACK)	POLYAMIDE	2
2	END CAP	SEE NOTE 2	2
1	ACTUATOR BODY	SEE NOTE 2	1
ITEM	DESCRIPTION	MATERIAL	QTY

CONCENTRIC COMPRESSION SPRING ON AIR-TO-SPRING MODELS ONLY (BOTH ENDS)

THIS DRAWING AND ALL INFORMATION HEREON IS THE PROPERTY OF ASAHI/AMERICA. ANY COPYING, REPRODUCTION OR UNAUTHORIZED USE IS FORBIDDEN WITHOUT WRITTEN CONSENT.

ASAHI/AMERICA

ISO 9001 CERTIFIED

35 GREEN STREET, P.O. BOX 653, MALDEN, MA.



PNEUMATIC ACTUATOR
SERIES 79P
EXPLODED VIEW

	NAME	DATE
DR	KENICHI MIYAZAKI	9/4/01
APPD	DAVE HURLEY	9/4/01
PROD	LEO LESTER	9/4/01
WO#/CO#		
FILE		

SIZE	A	DWG. NO.	1233	REV	A
SCALE	NTS	SHEET 1 OF 1			