

Series 92/94 Local Remote Stations



Standard Features

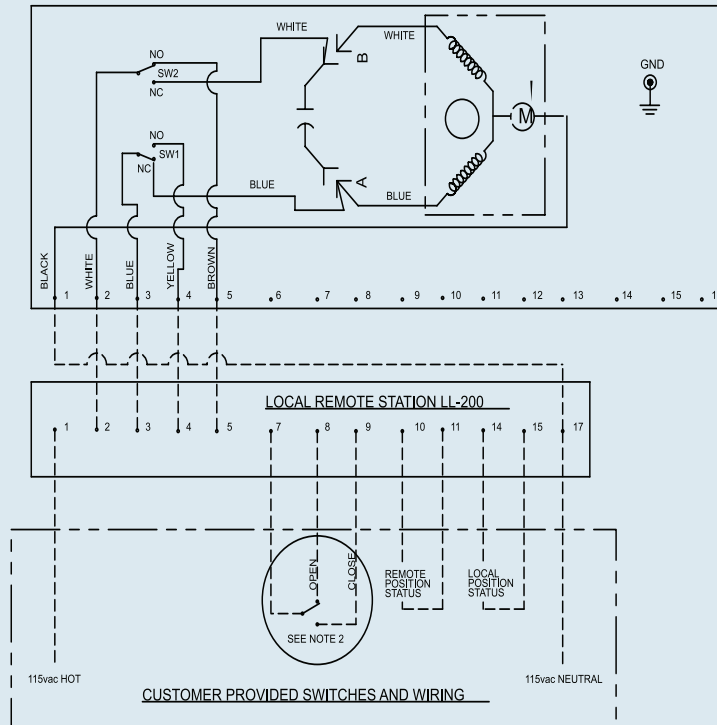
- Visual light indication
- Weatherproof enclosure constructed of fiberglass polyester
- Stainless steel trim
- Captive cover gasket
- Captive cover screws
- Two position selector switch (open and close)
- Three position selector switch (hand, off, auto)
- -40° F - 266° F temperature range

Options

- Explosion proof enclosure
- 316 stainless steel enclosure
- Contact factory for specific applications

LL-200 is to be used in conjunction with Series 92 or 94, AC powered and on/off actuator.

SERIES 92 OR SERIES 94 115 VAC ELECTRIC ACTUATOR
ACTUATOR SHOWN IN COUNTER-CLOCKWISE EXTREME OF TRAVEL, OR "OPEN" POSITION



- NOTE:
1. LOCAL REMOTE STATION IS NOT CLOSE COUPLED TO ACTUATOR. FIELD WIRING OF LOCAL REMOTE STATION TO ACTUATOR IS TO BE PERFORMED BY OTHERS.
 2. CUSTOMER PROVIDED SWITCH INSTALLED AT TERMINALS 7, 8, & 9 IS FOR REMOTE USE ONLY.

Series 92/94 Local Remote Stations



PT-100

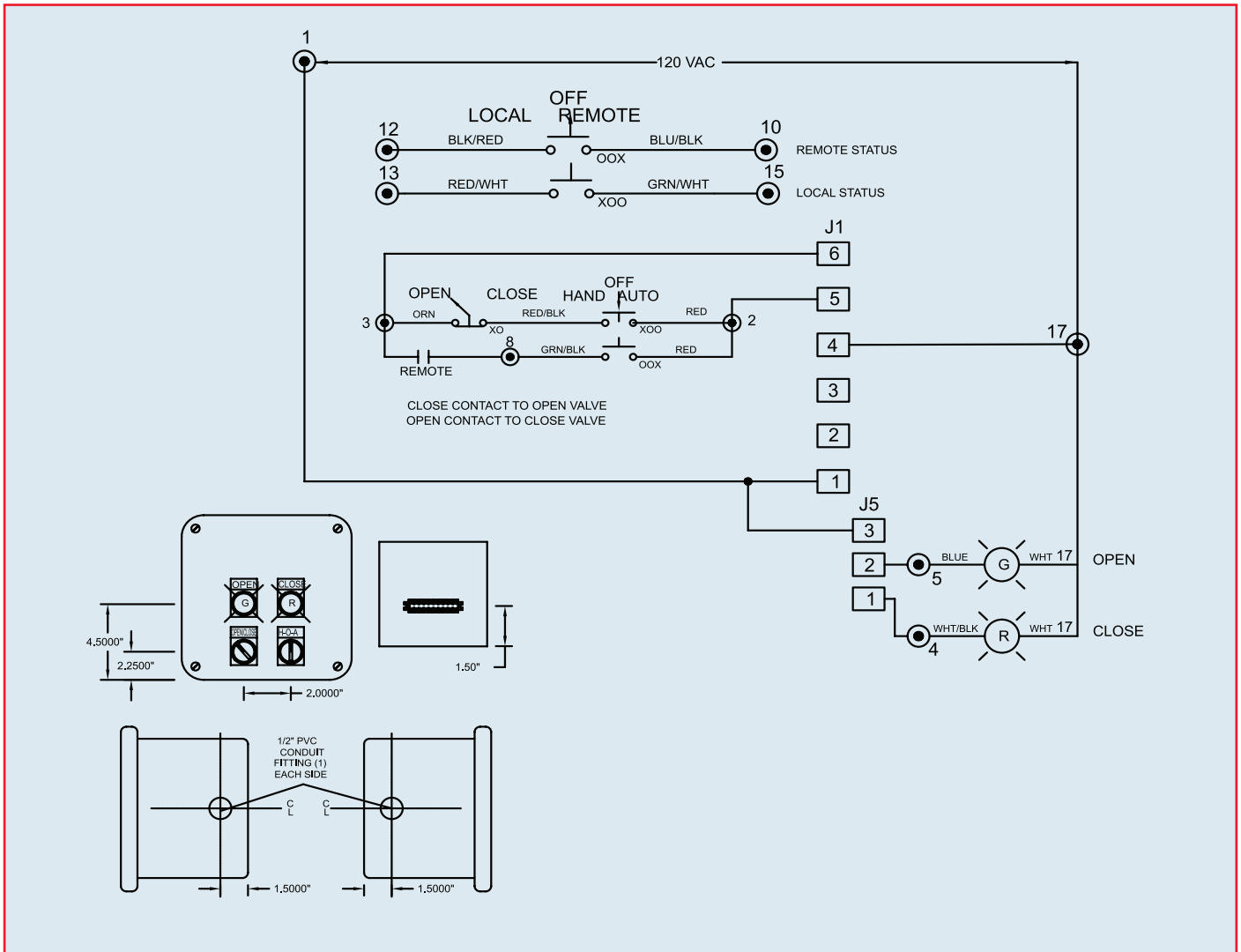
PT-100 is to be used in conjunction with Series 92 or 94 with Protek battery pack.

Standard Features

- Weatherproof enclosure constructed of fiberglass polyester
- Stainless steel trim
- Captive cover gasket
- Captive cover screws
- Two position selector switch (open and close)
- Two position selector switch (local/ remote)
- -40° F - 266° F temperature range

Options

- 316 stainless steel enclosure
- Contact factory for specific applications



Series 92/94 Local Remote Stations



PK-100

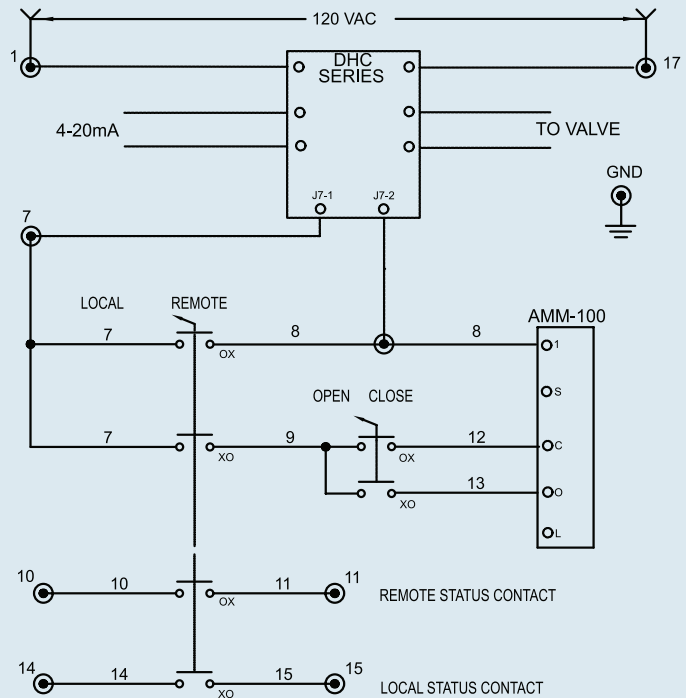
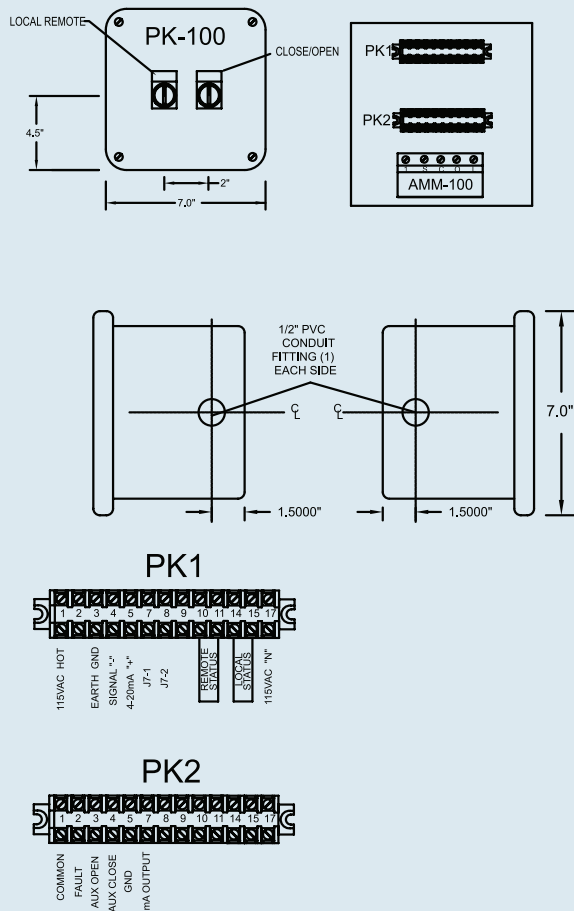
PK-100 is to be used in conjunction with Series 92 or 94, AC powered and DHC-Series positioner card.

Standard Features

- Weatherproof enclosure constructed of fiberglass polyester
- Stainless steel trim
- Captive cover gasket
- Captive cover screws
- Two position selector switch (open and close)
- Two position selector switch (local/remote)
- -40° F - 266° F temperature range

Options

- Explosion proof enclosure
- 316 stainless steel enclosure
- Contact factory for specific applications



Note:

1. Local remote station is not close coupled to actuator. Field wiring of local remote station to actuator is to be performed by others.

Series 10P Local Remote Stations



LL-200 is to be used in conjunction with Series 10, AC powered and on/off actuator.

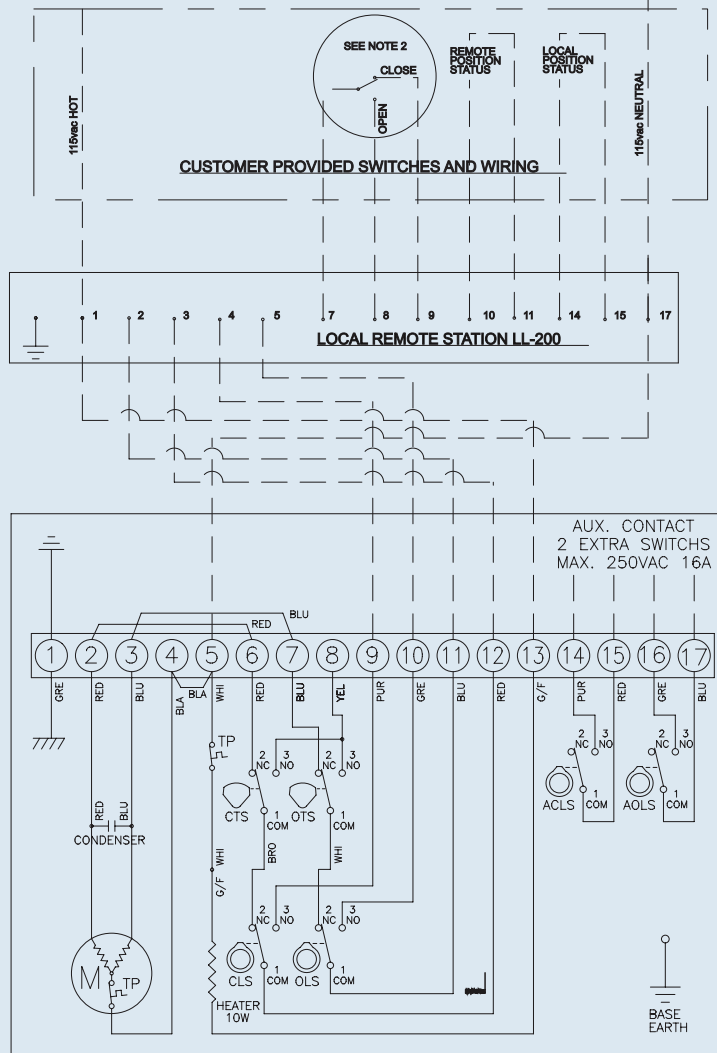
Standard Features

- Visual light indication
- Weatherproof enclosure constructed of fiberglass polyester
- Stainless steel trim
- Captive cover gasket
- Captive cover screws
- Two position selector switch (open and close)
- Three position selector switch (hand, off, auto)
- -40° F - 266° F temperature range

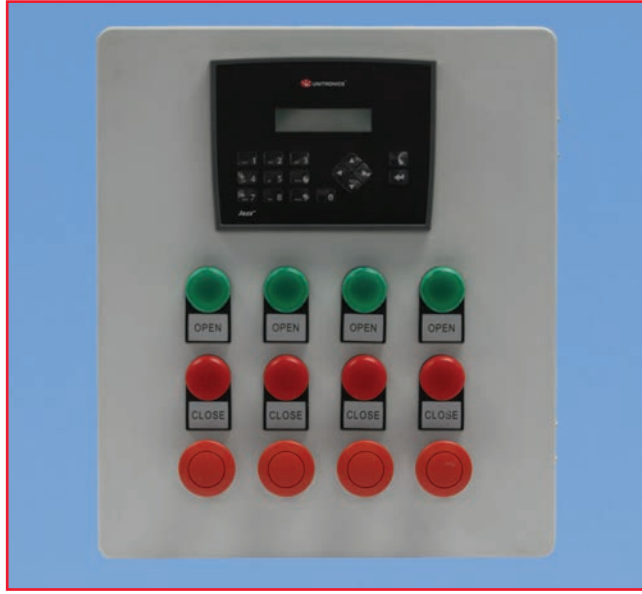
Options

- Explosion proof enclosure
- 316 stainless steel enclosure
- Contact factory for specific applications

- NOTE:**
1. LOCAL REMOTE STATION IS NOT CLOSE COUPLED TO ACTUATOR. FIELD WIRING OF LOCAL REMOTE STATION TO ACTUATOR IS TO BE PERFORMED BY OTHERS.
 2. CUSTOMER PROVIDED SWITCH INSTALLED AT TERMINALS 7, 8, & 9 IS FOR REMOTE USE ONLY.
 3. EACH ACTUATOR MUST BE POWERED THROUGH ITS OWN INDIVIDUAL SWITCH CONTACTS TO AVOID CROSS FEED.



HMI Local Remote Station for Series 92 & 94



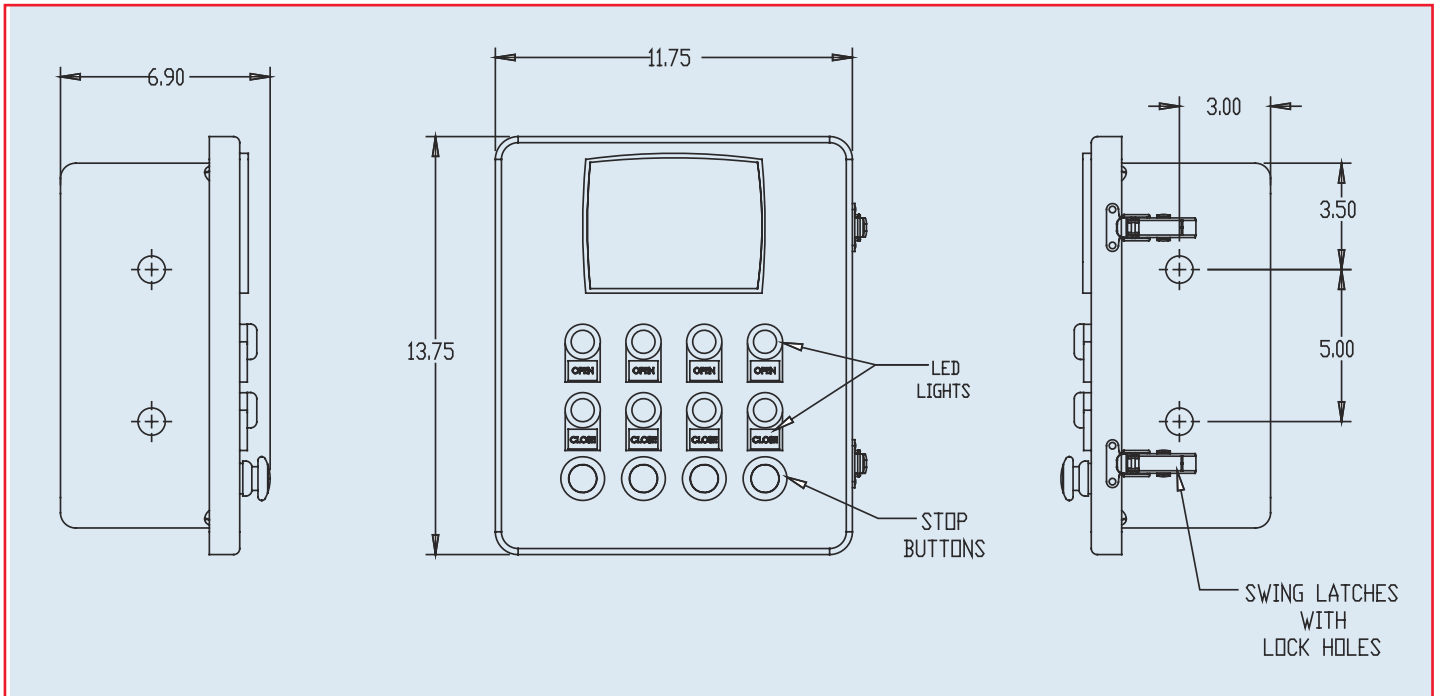
Standard Features

- Controls up to Four (4) Actuators
- Simple Pushbutton Operation
- 2-Lines X 16-Character LCD Display
- NEMA Type 4X Enclosure Constructed of Fiberglass Polyester
- Stainless Steel Trim
- Captive Cover Gasket
- Lockable Latched Cover
- Terminal Blocks for Inputs
- DPDT Relays and Sockets for Outputs
- Local/Remote Status Contacts
- Indicating LED's for Each Actuator (Green Open/Red Close)
- Four Individual STOP Buttons (one for each actuator)
- 32° F - 122° F Temperature Range
- Four (4) Provisions for 1/2" Conduit
- 120 - 240vac Power Supply Required

Options

- SS enclosure
- Contact factory for specific applications

Dimensions



HMI/PLC Control System



Asahi/America's HMI/PLC control system is a custom designed built to order system that allows you to easily control any number of valves or other process control items using a singular system.

Each system includes to a touchscreen monitor or push-button controls, can be programmed quickly via simple ladder logic and is housed in a NEMA 4X enclosure for ultimate safety and security.

Standard Features

- Complete HMI/PLC package
- Push-button operation
- NEMA Type 4X Enclosure constructed of fiberglass polyester
- Stainless steel trim
- Captive cover gasket
- Lockable latched cover
- Four (4) provisions for 1/2" conduit
- 24 VDC power supply included with HMI/PLC package
(100 VAC – 230 VAC supply power required)
- Programming via simple ladder logic
- Basic starter programs available
- No software licensing fees

Ordering Considerations

What type of user interface do you require?

Push button or touchscreen

What are your graphic requirement?

Graphics available with touchscreen option only

What networking connection(s) will you need?

Modbus, profibus, canbus, ethernet

What inputs will you require and how many?

Digital or analog

What outputs will you require and how many?

Digital, analog, relay, transistor or PWM

Do you require data logging?

Do you require graphs?

What other special considerations do you have?

HMI/PLC Control System

General Features

- Color touch screen
- HMI Graphs and trends
- Up to 1024 user designed screens
- Up to 500 images per application
- Real-time clock functions

Communication

- Discrete I/O
- Analog I/O
- Profibus
- Modbus
- Canbus
- Ethernet

Snap-in Expansion Modules

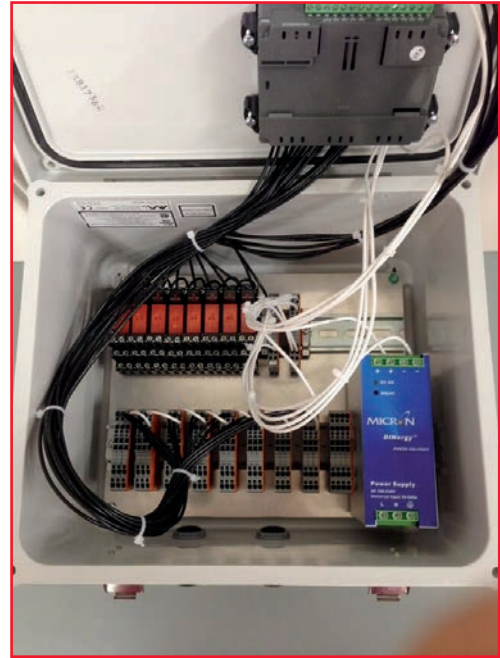
- Data logging
- HMI graphs
- RS232/RS485 ports

Available Inputs and Outputs

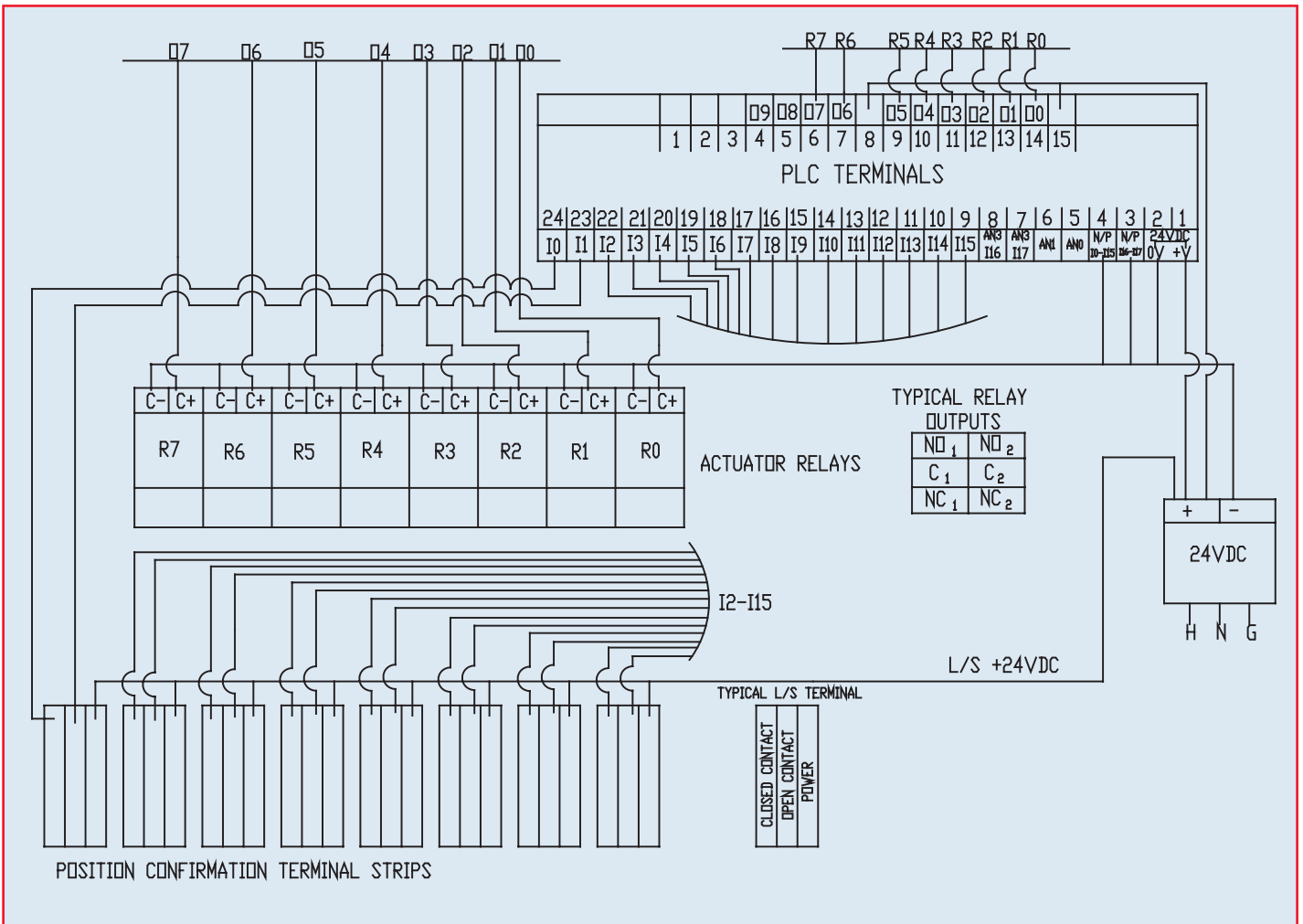
Inputs	Outputs
Digital	Digital
Transistor	Transistor
Relay	Relay
Analog	Analog
Shaft encoder	High-speed/PWM
Temperature measurement	
High-Speed counter	



HMI/PLC Control System

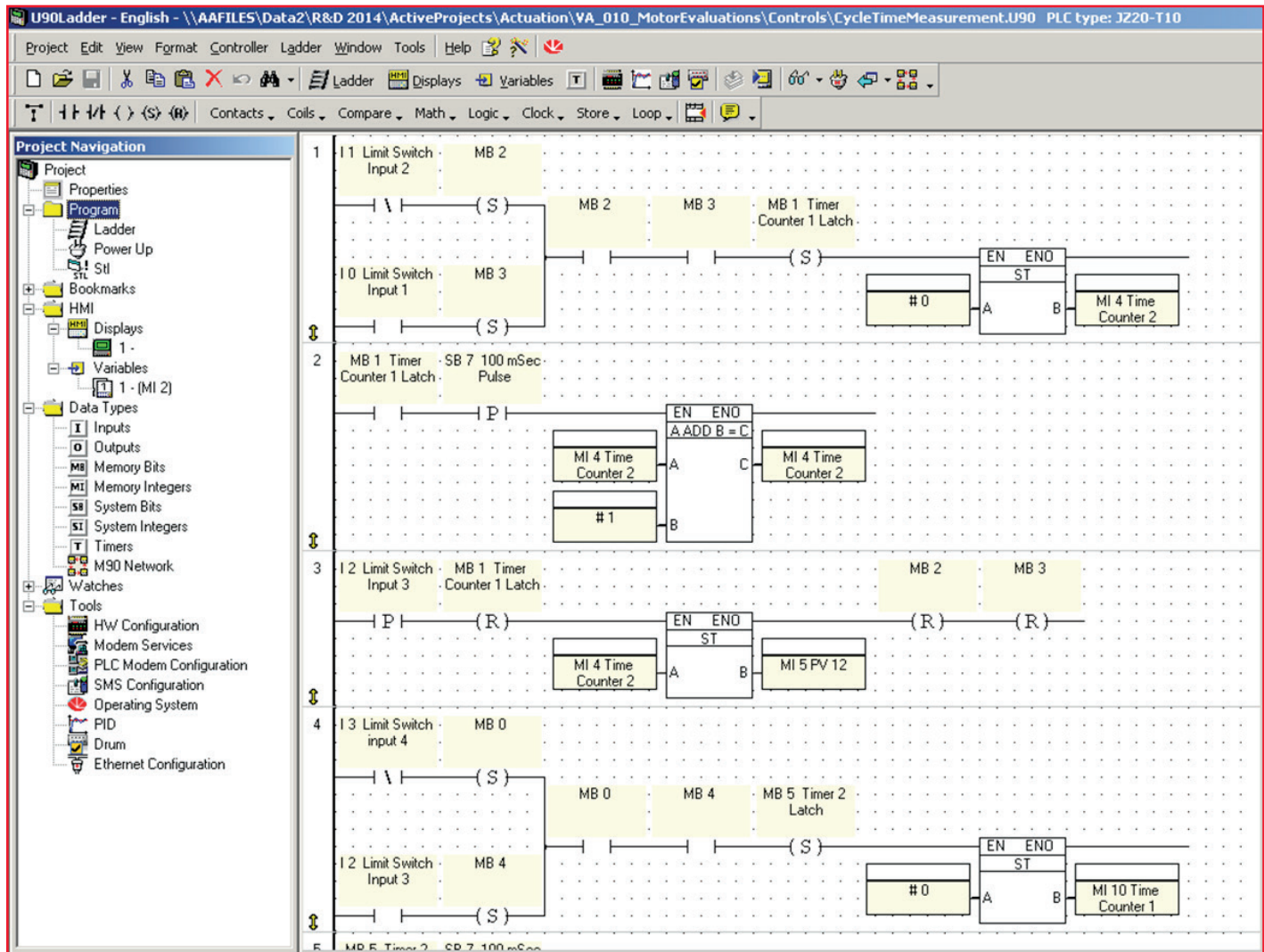


Sample Wiring



HMI/PLC Control System

Screen Shot - Ladder Logic



Programming

- Open platform
- Easy to program
- No software licencing fees