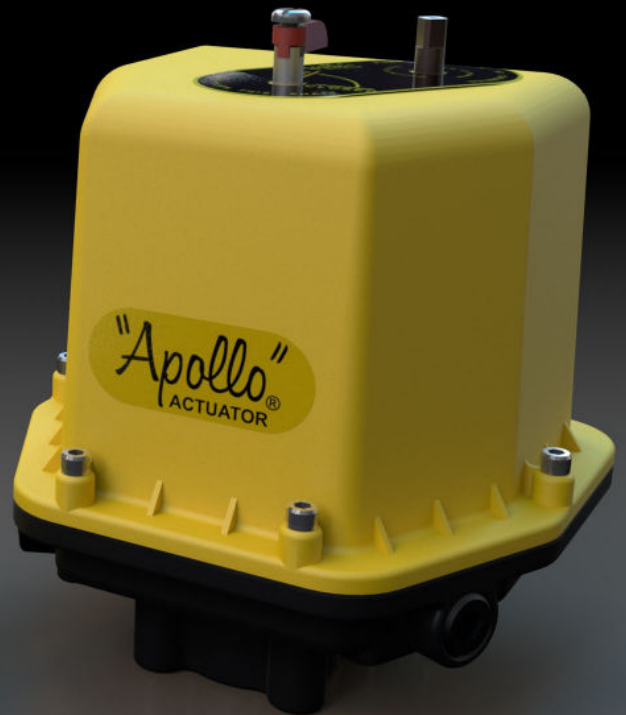


# "Apollo"® Valves

actuation



actuation

[aalberts-ips.us](http://aalberts-ips.us)

customer service 704.841.6000  
CAN 800.443.1603



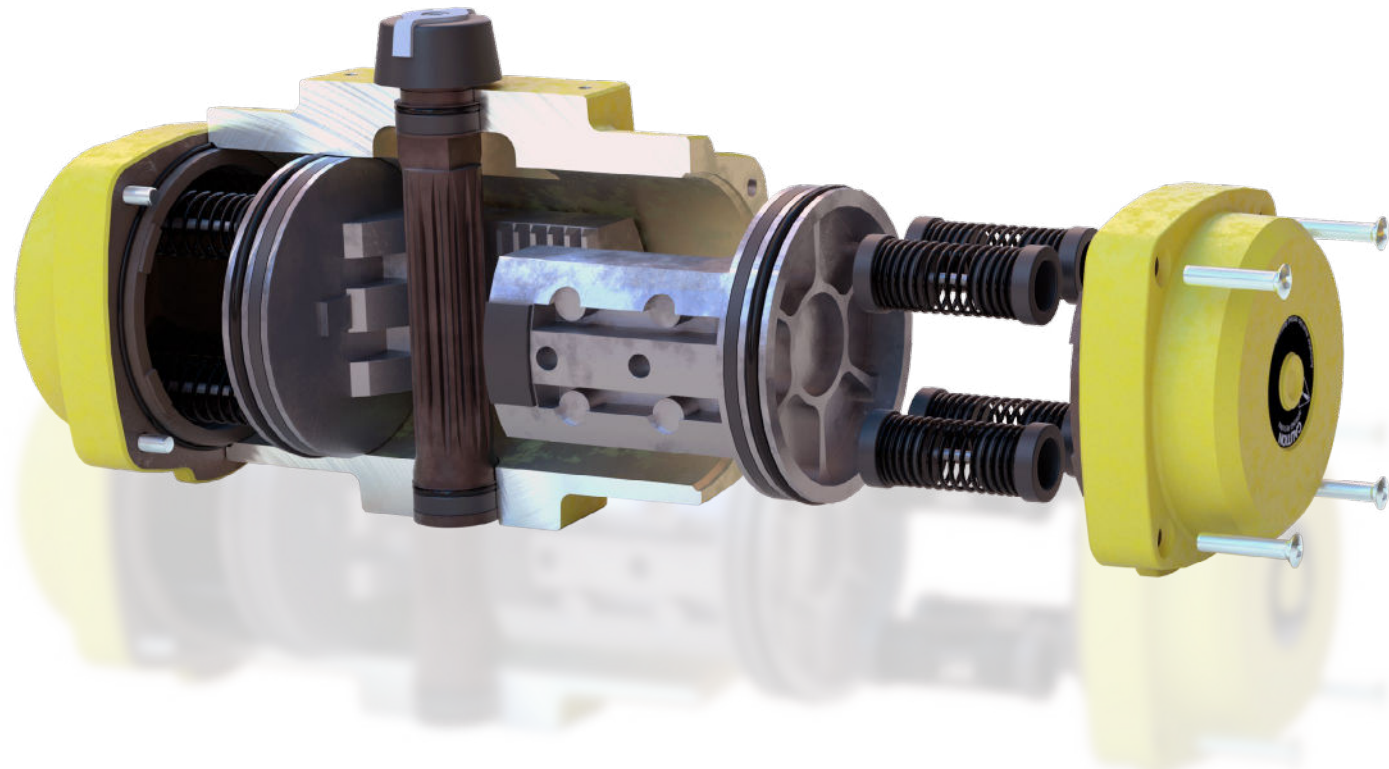
integrated  
piping systems



## ACTUATION PNEUMATIC RACK & PINION

Designed and manufactured for the ultimate durability and reliability, Apollo® pneumatic rack & pinion actuators provide outstanding service life.

Apollo® rack & pinion actuators have **replaceable insert drive adapters** in all but the largest models, and many units have dual ISO 5211 “F” series bolt patterns. The numerous actuator drive and bolt pattern combinations allow **direct mounting of several valve styles**.



### FEATURES

- **Body:** Cast aluminum, yellow chromate powder coat finish
- **End Caps:** Die cast aluminum, yellow chromate powder coat finish
- **Pistons:** Hard anodized die cast aluminum
- **Pinion:** Aluminum alloy, hard coat anodized finish
- **Drive Inserts:** Extruded aluminum, hard-coat anodized finish
- **Preloaded Concentric Springs:** Spring steel, electrophoretic finish

### BENEFITS

- Compact rack & pinion design
- Designed for use on a variety of valve types: Ball Valves, Butterfly Valves, Plug Valves
- Applicable to damper and door openers
- Both double-acting and spring-return units
- Double-acting torque outputs from 220 to 6028 in-lb with an 80 psi air supply
- Removable/replaceable drive inserts
- Pre-loaded spring assemblies

- **Bushings:** Polyoxymethylene (POM)
- **O-Ring Seals:**  
Standard Temp. (-4° to 180° F): Buna-N  
High Temp. (-4° to 250° F): Fluorocarbon  
Low Temp. (-40° to 180° F): Silicone
- **Fasteners:** Stainless or alloy steel, Delta®-Tone coated

- ISO 5211 valve mounting
- NAMUR (VDI/VDE 3845) accessory mounts
- ATEX classification II, 2 GD, zones 1 or 2 (gases) and 21 or 22 (dust)
- Anti-blowout pinion design
- Maximum pressure rating: 116 psig (8 bar)
- Compatible media: clean, dry air, filtered non-corrosive gas or light hydraulic oil
- Pre-lubricated for the life of the actuator
- Chromate corrosion protection on all aluminum components
- Each unit is serialized
- 5 Year Apollo® warranty



## ACTUATION ELECTRIC

Designed to be rugged and easily installed, Apollo® AE Series electric actuators deliver the most desirable features and performance in their class. All sizes now CSA listed as standard\*.



### FIVE OUTPUT TORQUES, ONE HOUSING

- **Torque Values:** 200, 400, 600, 800 and 1,000 in-lb
- **Housing:** Anodized die cast aluminum
- Long service life
- Fiberglass reinforced nylon cover resists corrosion
- Nitrile gasket and seals cover all penetration points in housing and cover
- Precision cut and heat treated alloy spur gears
- Permanently lubricated enclosed gear train
- NEMA 4, 4X
- 5 Year Apollo® warranty

### EASY TO USE

- Two separate 1/2" NPT conduit entrances for easier wiring and signal separation
- 12-position pre-wired terminal strip includes standard connections for remote open/closed position indicators; lots of room for wiring options
- Unrestricted mounting orientation
- Built-in thermal overload protection in all AC motor actuators
- Limit switches have an 11 amp rating at 115 VAC
- High visibility valve position indicator standard on all models

### MANY STANDARD FEATURES

- Stainless steel push-and-turn manual override shaft, position indicator shaft and female output
- ISO 5211 F07 drive output reduces inventory of mounting kits
- 115 AC & 220 AC models feature a 25% duty cycle below 100° F (24AC — 20% duty cycle below 100° F)
- 12 and 24 DC — all DC voltage models provide 100% duty cycle for 1 hour after which DC motor is reduced to 80% duty cycle.
- Reversible rotation

### BROAD TEMPERATURE RANGE

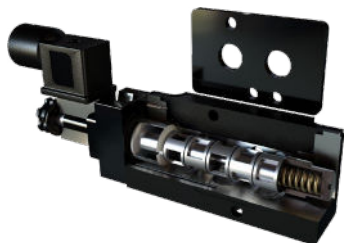
- Operates from -40° F (when equipped with 15 watt heater and thermostat) to 150° F

### AVAILABLE OPTIONS

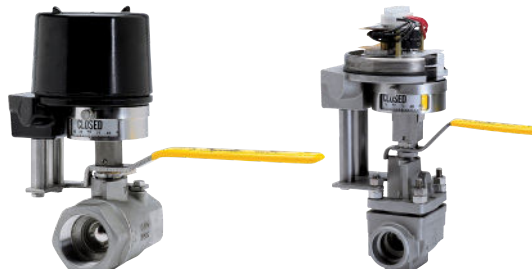
- Actuators can be ordered with one, two or three additional limit switches
- For low temperatures: actuators can be equipped with a thermostatically controlled heater element
- Motor brake is necessary when mounting actuator to a butterfly valve

\* Positioner and transmitter not CSA listed.

**NAMUR MOUNT SOLENOID  
WITH TRANSITION PLATE**



**PROXIMITY VALVE POSITION  
MONITORING SYSTEMS**



**OSHA  
LOCKOUT DEVICE**



**STONEL QUARTZ  
LIMIT SWITCHES**



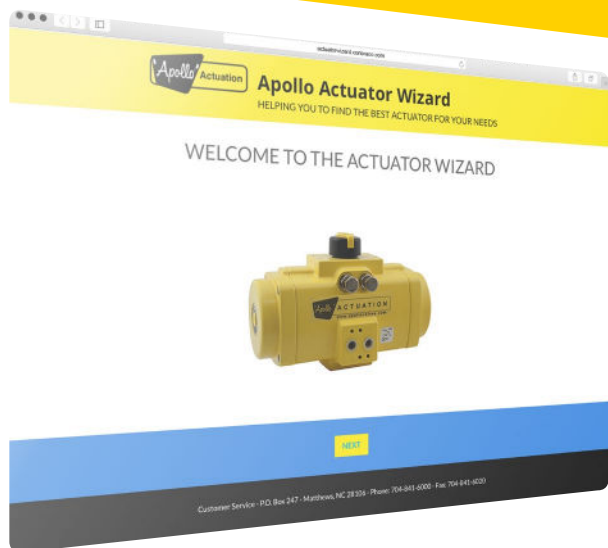
**MONITEUR  
LIMIT SWITCHES**



**VRC POSITIONERS**



**PMV POSITIONERS**



**ACTUATION  
WIZARD**

Helping you to find the best actuator assembly for your needs based on valve type, media conditions and actuator requirements.  
[actuatorwizard.conbraco.com](http://actuatorwizard.conbraco.com)

ACTUATION4PG 03/21 2500